

4

3

2

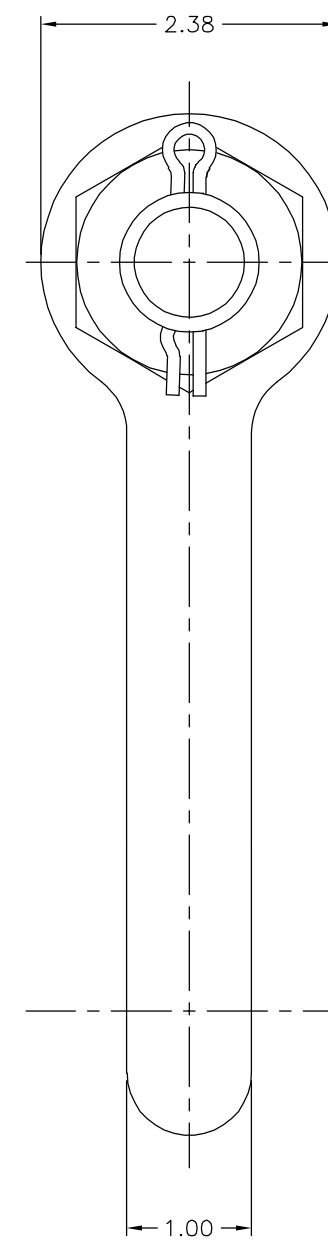
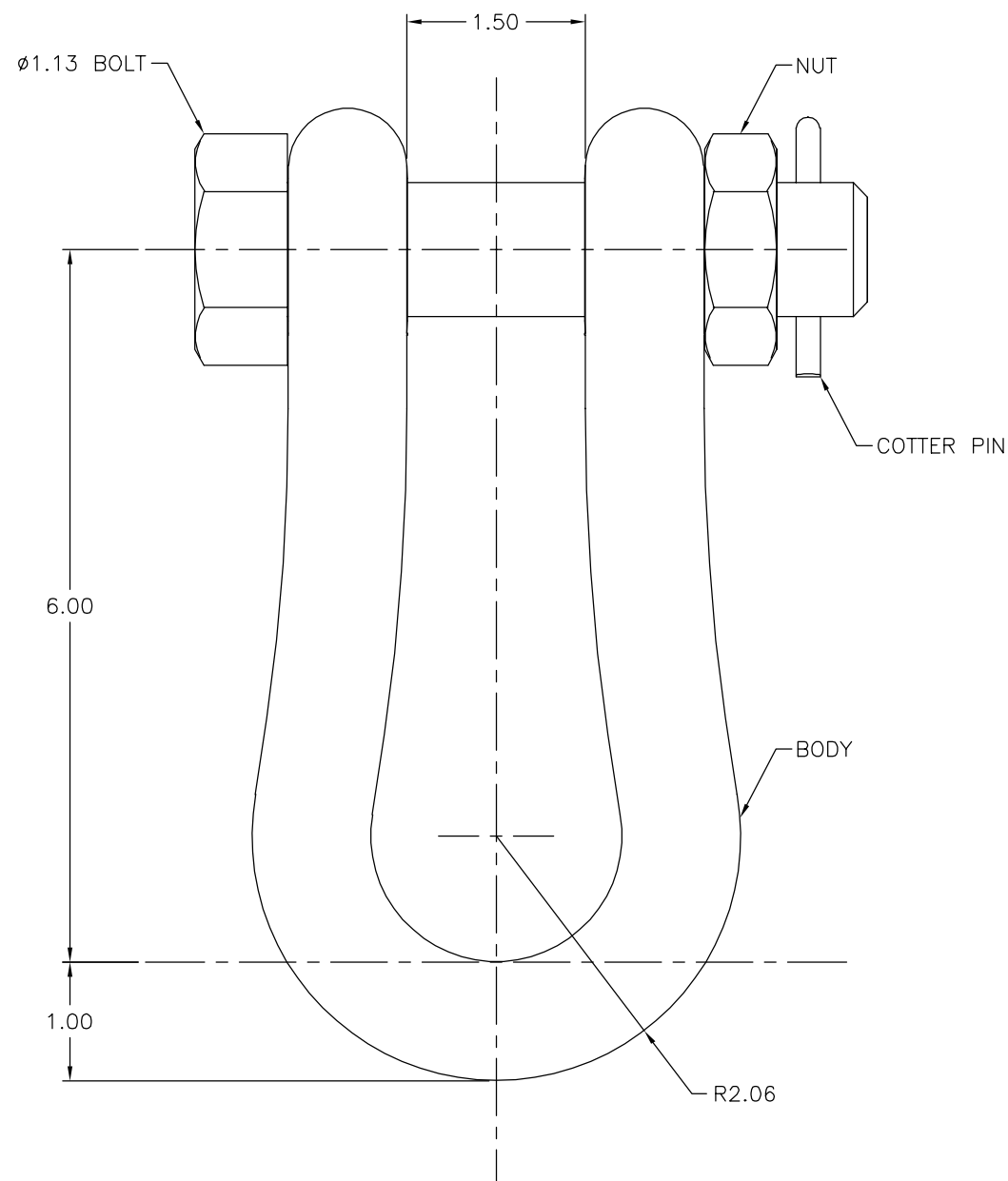
1

B

B

A

A



NOTES:

- MATERIAL: BODY - GALV. STEEL, COTTER PIN - STAINLESS STEEL, BOLT & NUT - GALV. STEEL .
- HOT DIP GALVANIZED PER ASTM A153.
- DIMENSIONS IN INCHES.
- WEIGHT: 7.00 LBS APPROX.

EC #	DATE	CHG BY	CKD BY	APPD BY
--	--	--	PTB	PTB
DESC OF DWG: UPDATED DRAWING TEMPLATE				
REASON (S) FOR CHANGE: --				
DISPOSITION OF MAT'L: --				

THIRD ANGLE PROJECTION

CONFIDENTIAL: THIS DRAWING AND ITS CONTENTS ARE CONFIDENTIAL AND THE EXCLUSIVE PROPERTY OF HUBBELL POWER SYSTEMS. NO PUBLICATION, DISTRIBUTION, OR COPIES MAY BE MADE WITHOUT THE WRITTEN CONSENT OF HUBBELL POWER SYSTEMS. HUBBELL POWER SYSTEMS UNPUBLISHED ALL RIGHTS RESERVED UNDER THE COPYRIGHT LAWS.



TITLE			
ANCHOR SHACKLE 120K LBS ULT. STR.			
CATALOG NUMBER: 974153001			
SIZE	DWG NO.	PART / ASSY NO.	REV
B	CUTSHEET	--	B
SCALE: NS	DRN BY: WPT	DATE: 11/30/17	SHEET 1 OF 1

4

3

2

UNCONTROLLED COPY WHEN PRINTED 1